

SOMMAIRE

01- Poteau type 1.

02- Poteau type 2.

03- Poteaux type 3 et 4.

04- Pieds de poteau type A.

Nota :

LC = Lamellé-collé

BM = Bois Massif

Catégorie des bois employés :

Bois massifs : C24

Lamellé-collé : GL24h (sauf indication contraire)

EXE

BOIS CONSEIL

BET Charpente bois
A. BILLIARD Ing. ESTP

La dent du loup
38 360 SASSENAGE
Tél. : 04 76 26 49 14
Fax : 04 76 53 07 05

DOSSIER : BC 10 040

Crèche Arc En Ciel
38 590 Saint Etienne de Saint Geoirs

ENTREPRISE : MANCHON SARL

PLAN N° 07

FERRURES

Feuillets 1 à 3

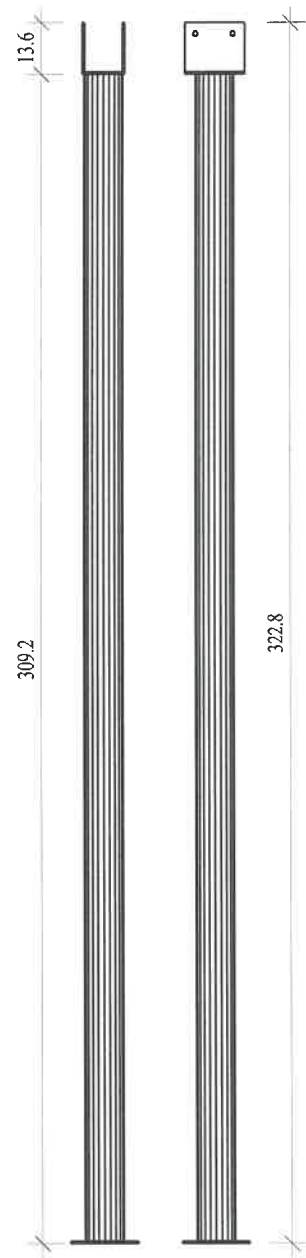
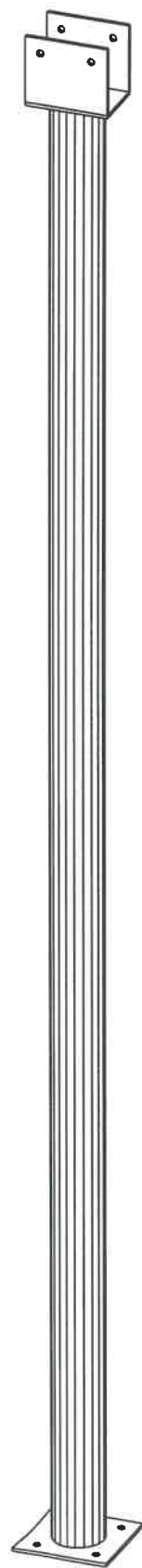
Ech: Cf feuillets

Date : 06-06-11

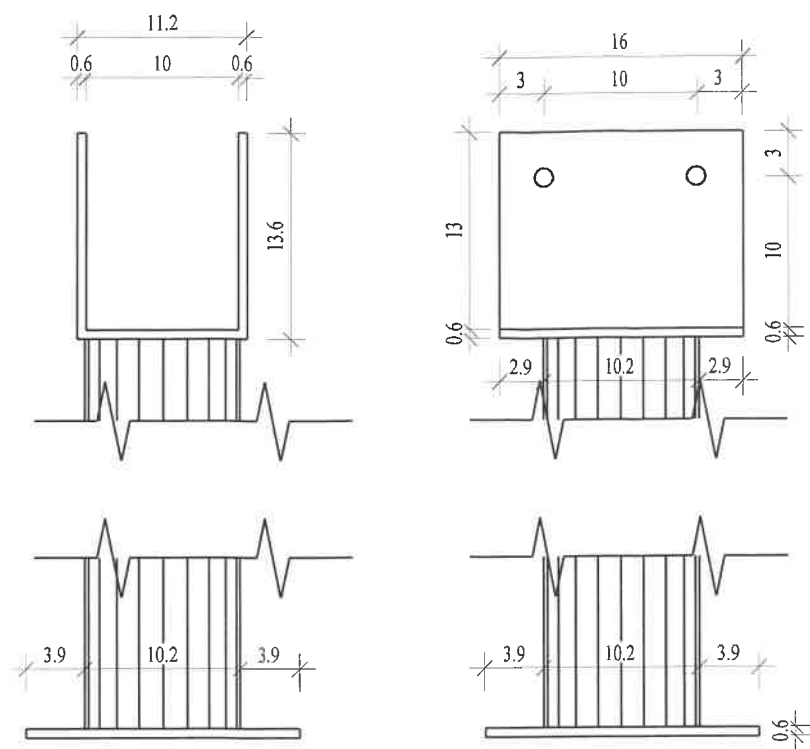
Indice	Date	Modifications
B	16-06-11	Modifications suite aux remarques architecte.
C	22-06-11	Mise à jour des cotes.

Ces documents sont la propriété de BOIS CONSEIL ; ils ne peuvent pas être reproduits ou utilisés sans son autorisation

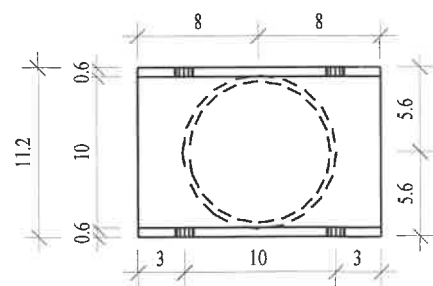
Poteau type 1 :



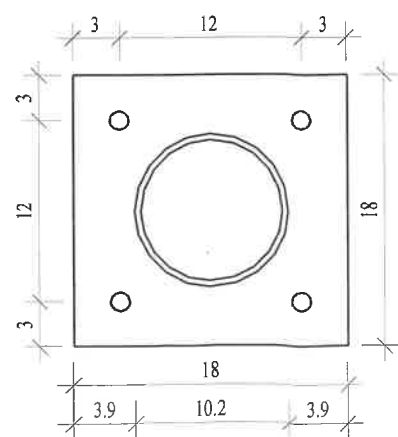
Hauteur à valider par FAVARION



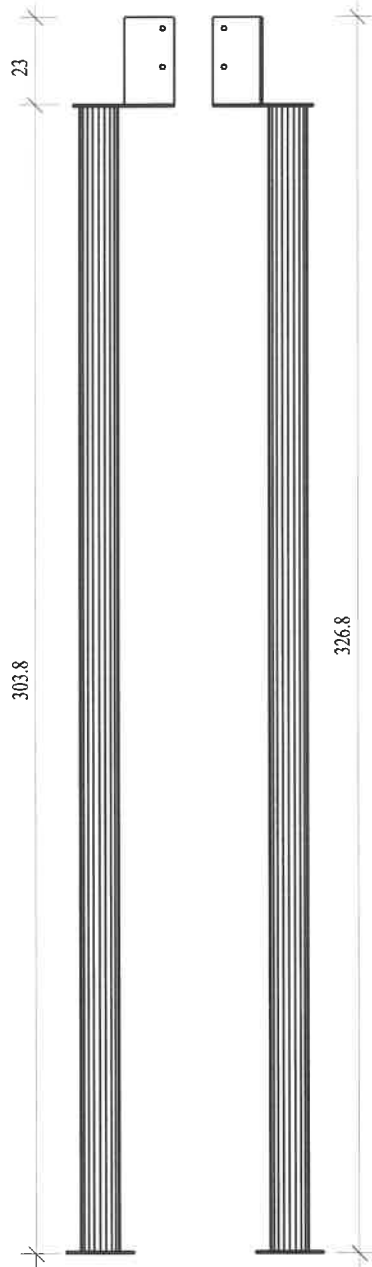
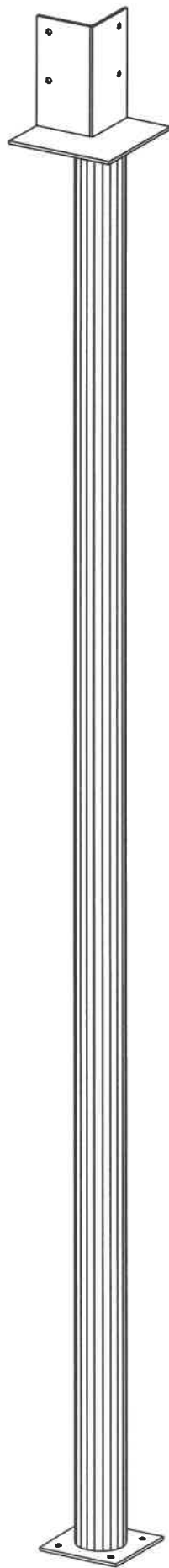
Platine haute :



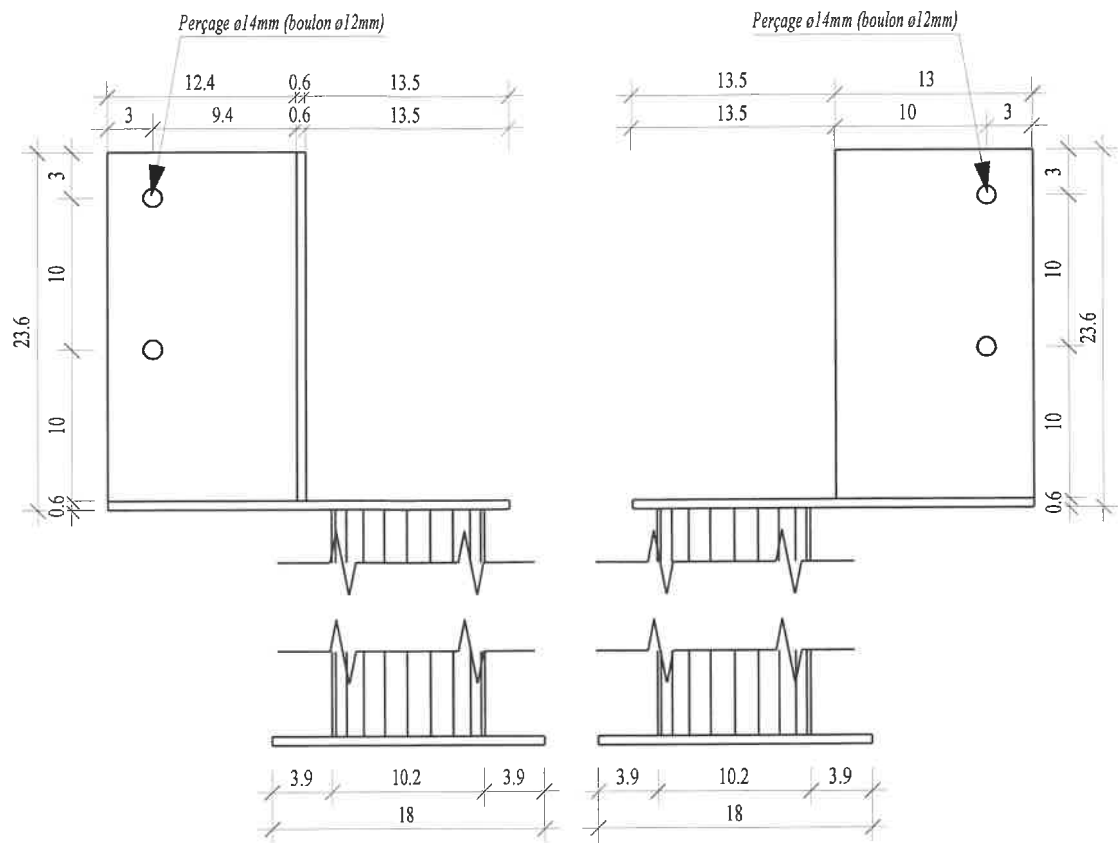
Platine basse :



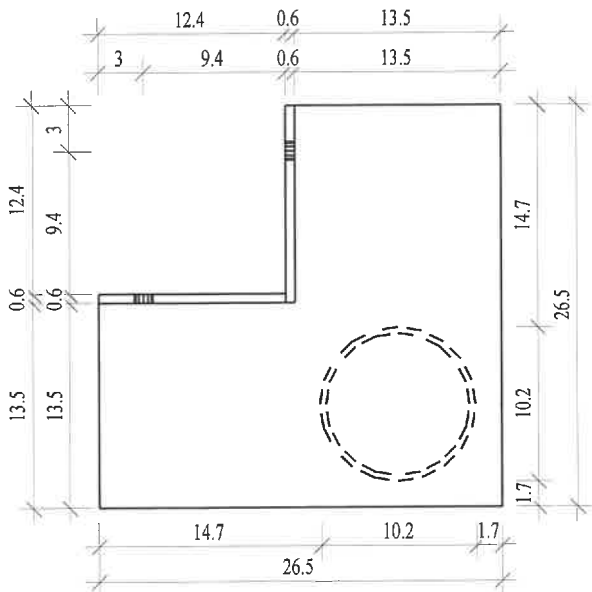
Poteau type 2 :



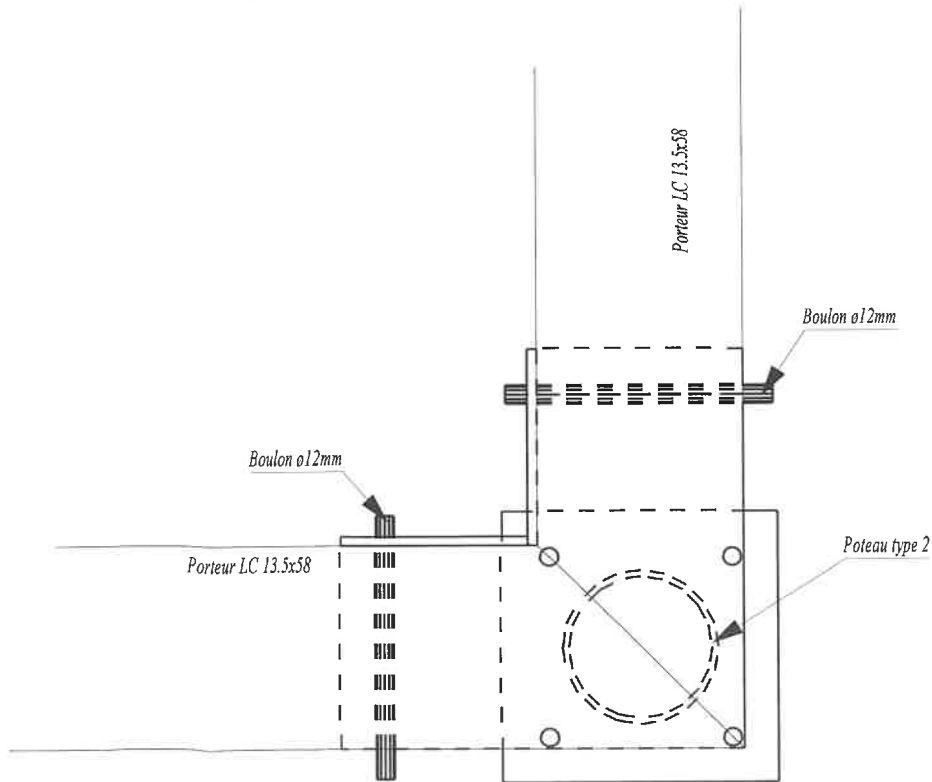
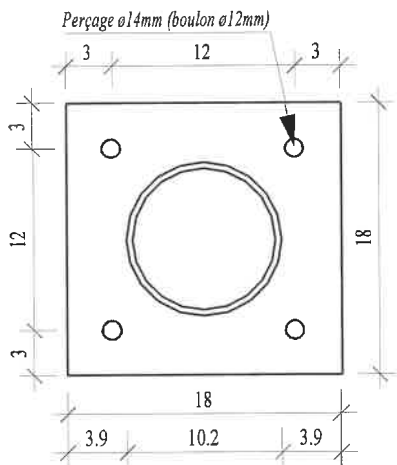
Hauteur à valider par FAVARION



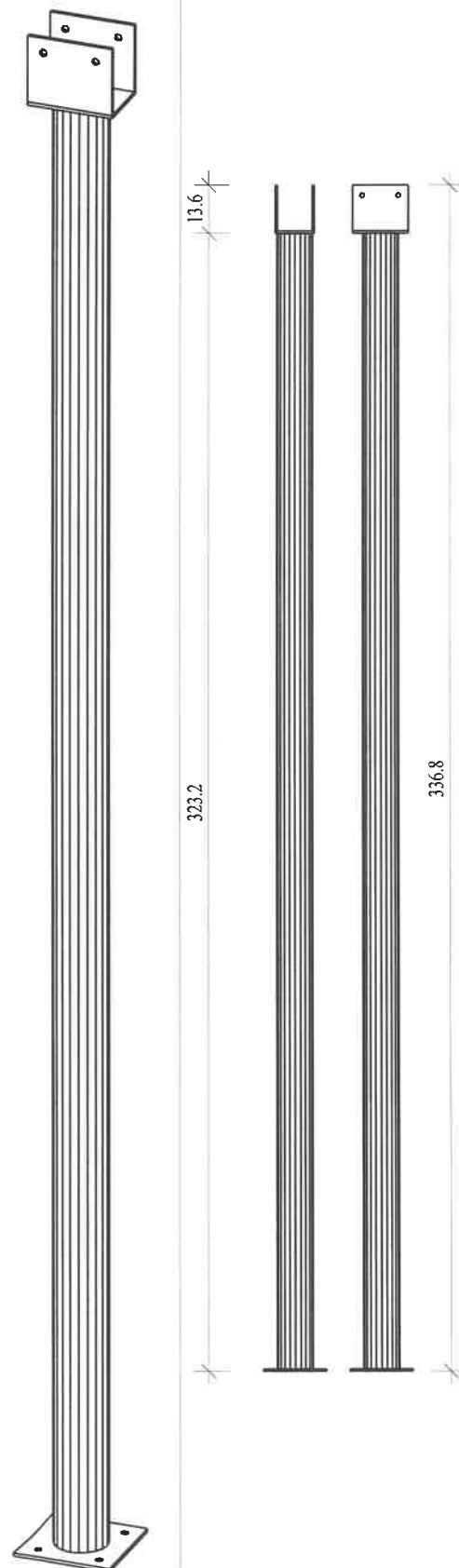
Platine haute :



Platine basse :

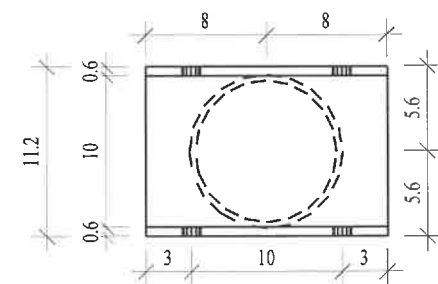


Poteau type 3 :

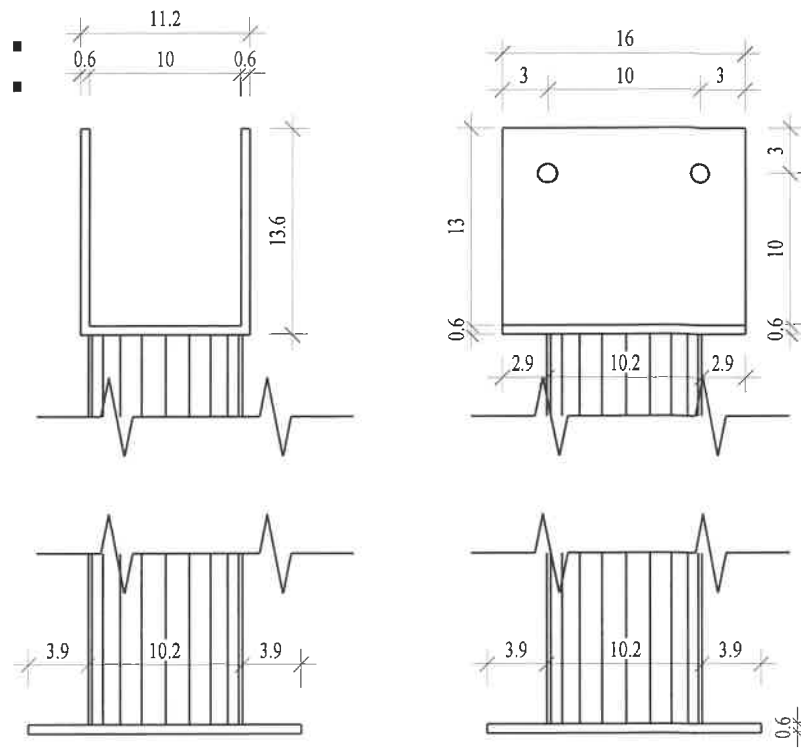
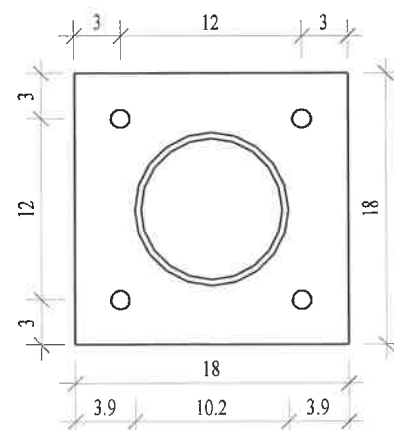


Hauteur à valider par FAVARION

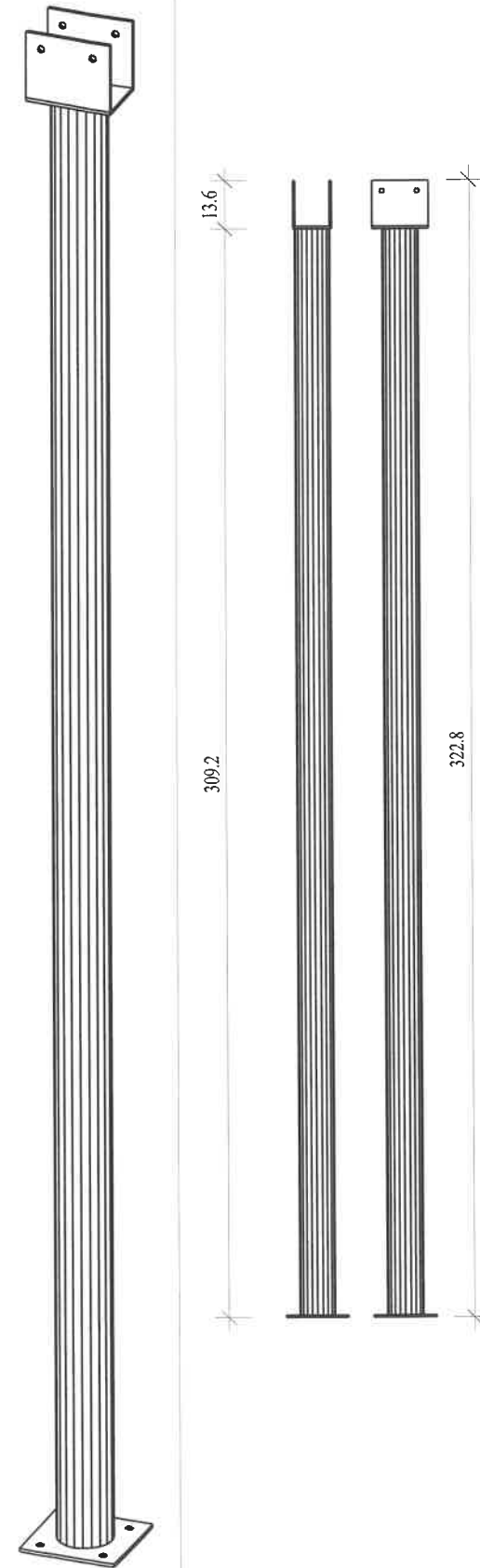
Platine haute :



Platine basse :

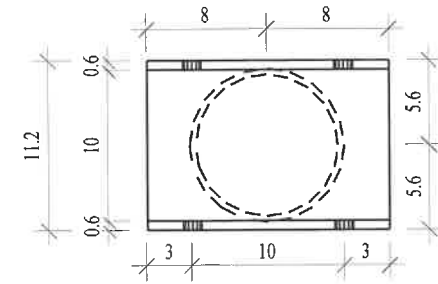


Poteau type 4 :

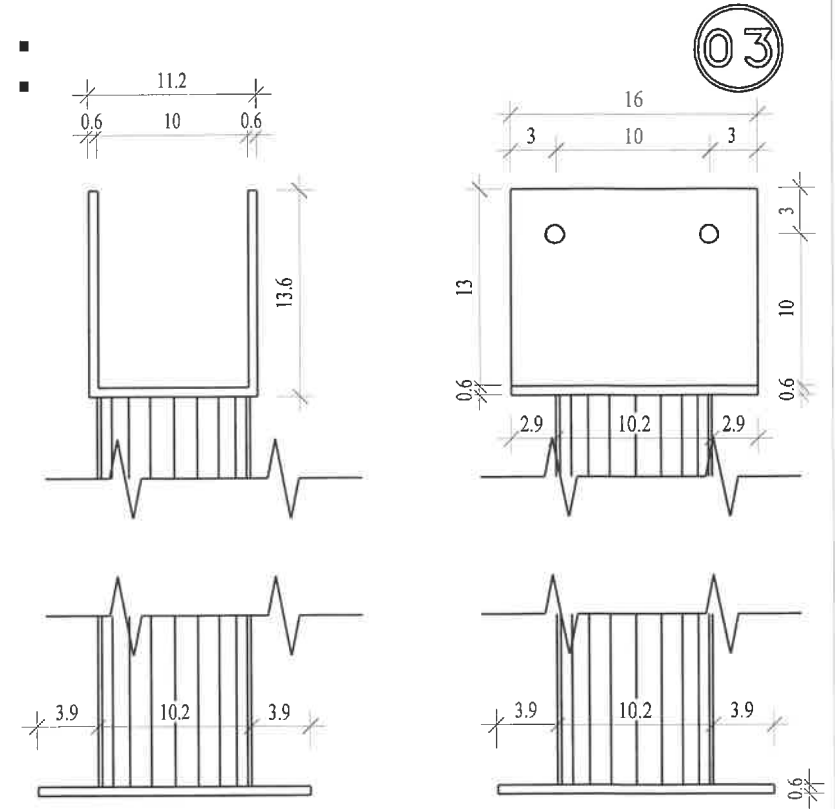
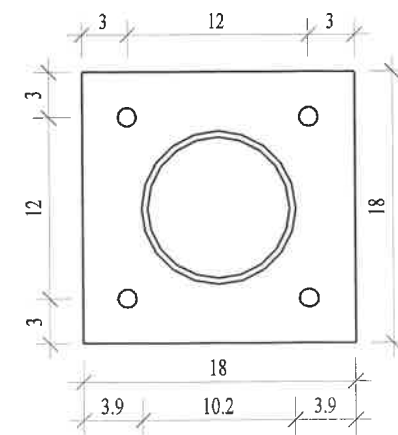


Hauteur à valider par FAVARION

Platine haute :



Platine basse :



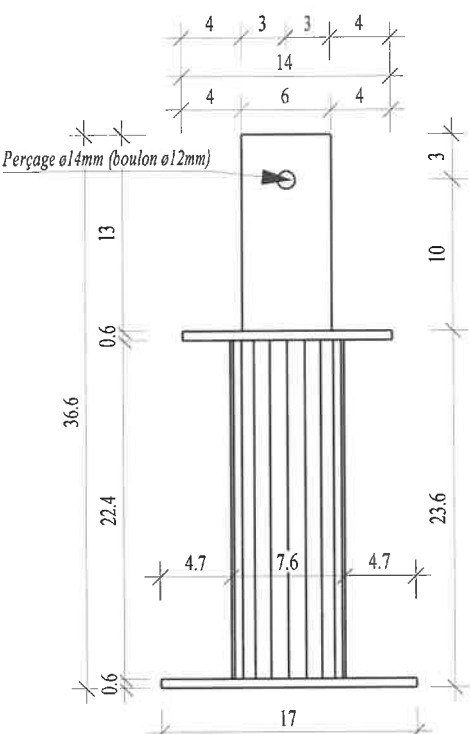
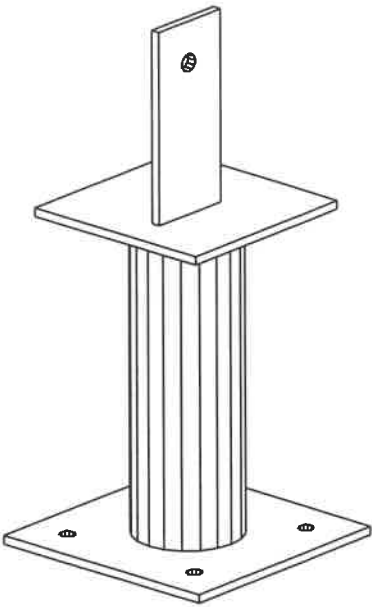
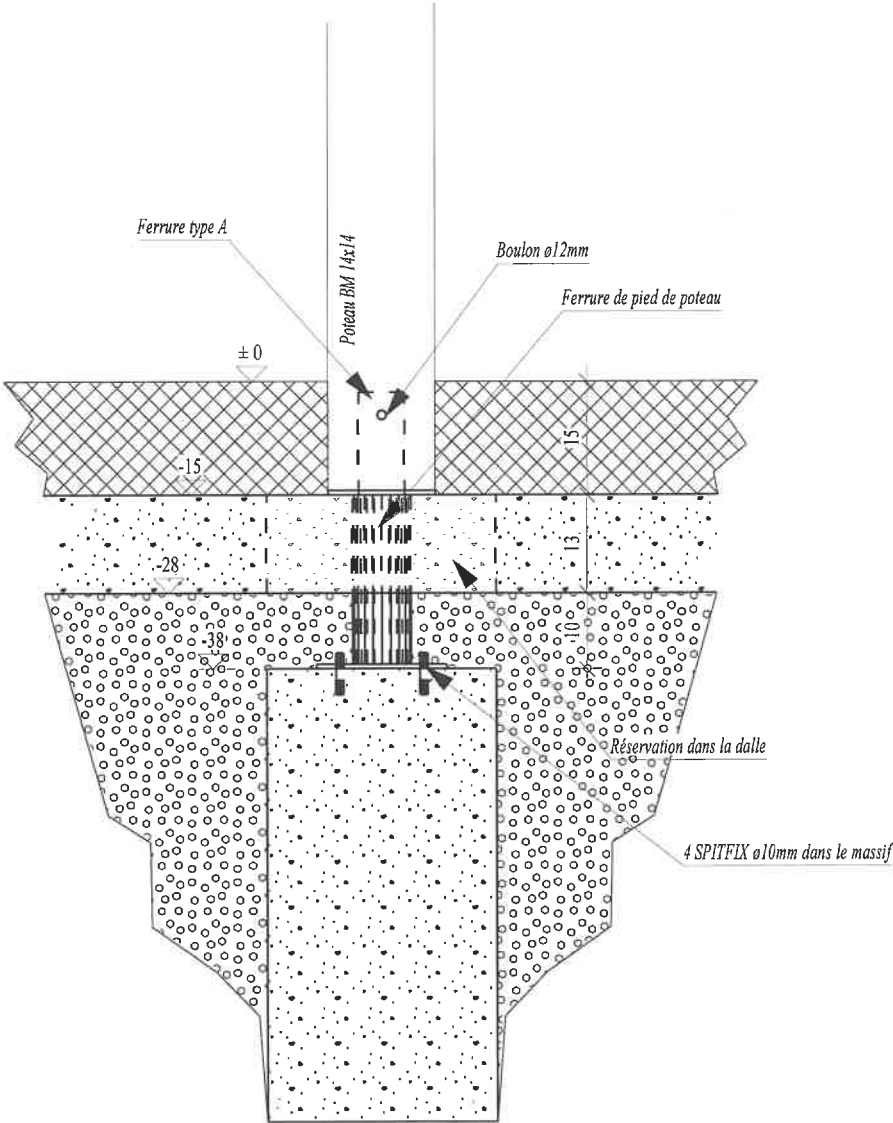
03

Liaison poteau/massifs béton :

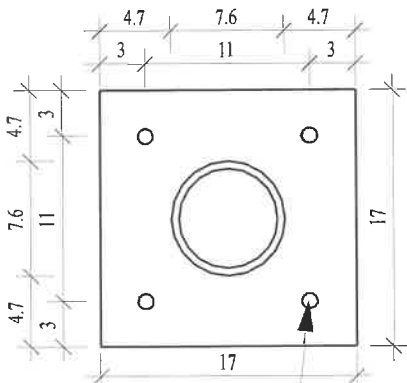
Ferrure des pieds poteau (ferrure type A) :

04

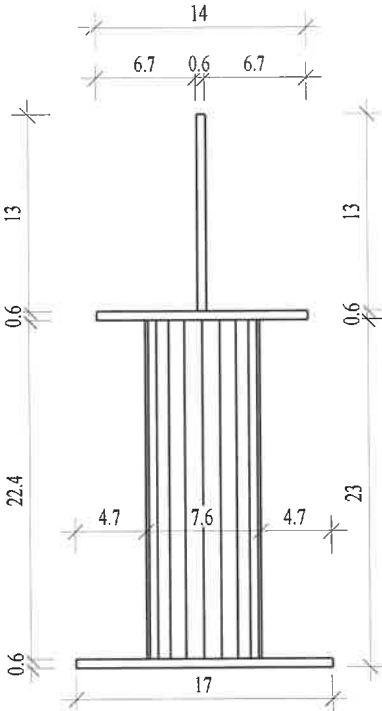
Coupe sur l'assemblage :



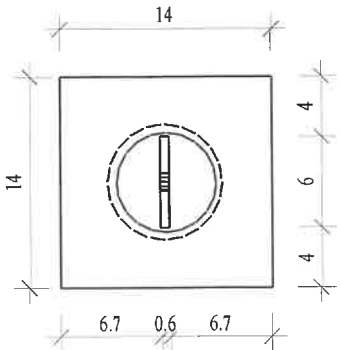
Platine basse :



Perçages ø12mm (SPITFIX ø10mm)



Platine haute :



Ech: 1/5e

23-06-11